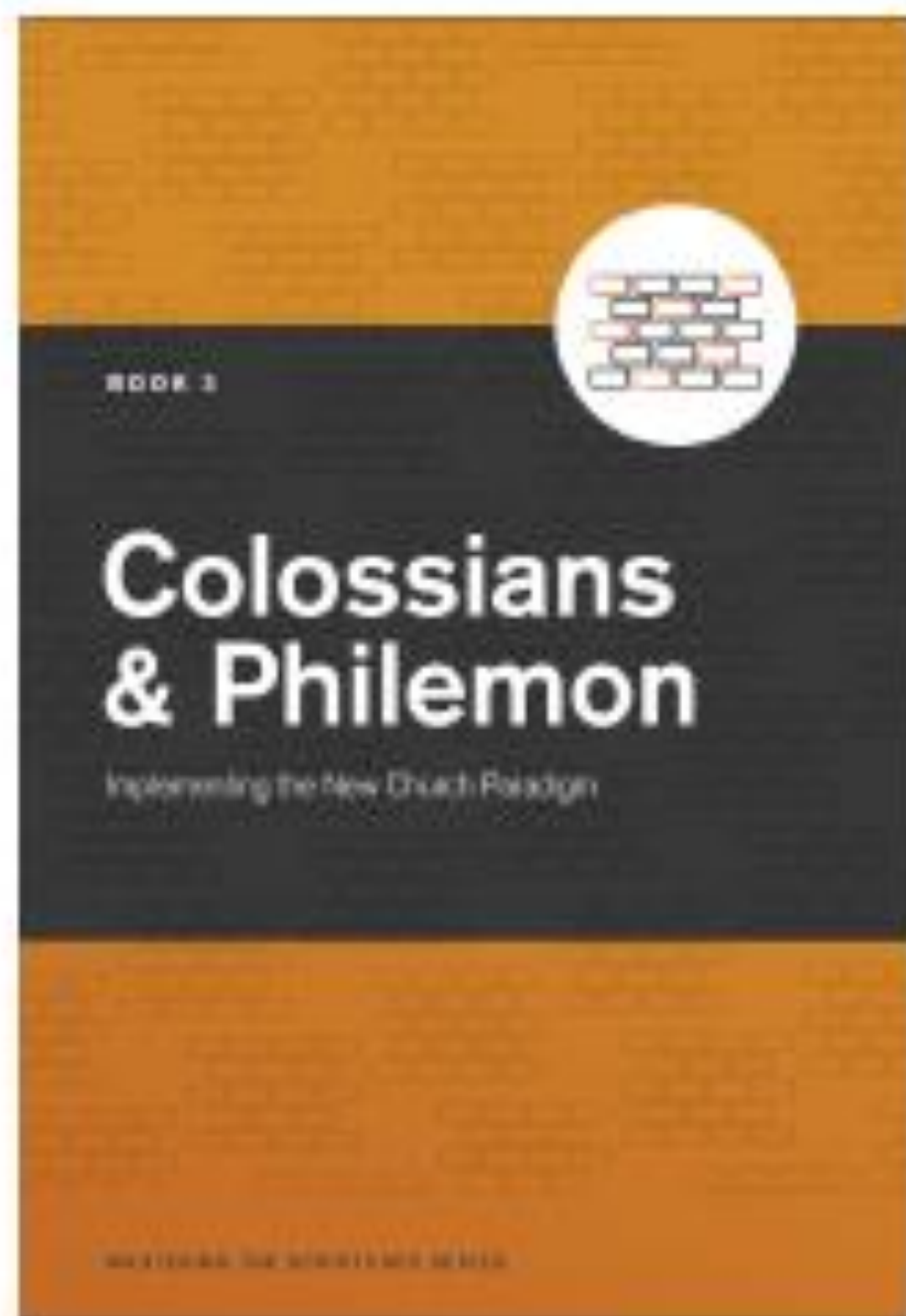
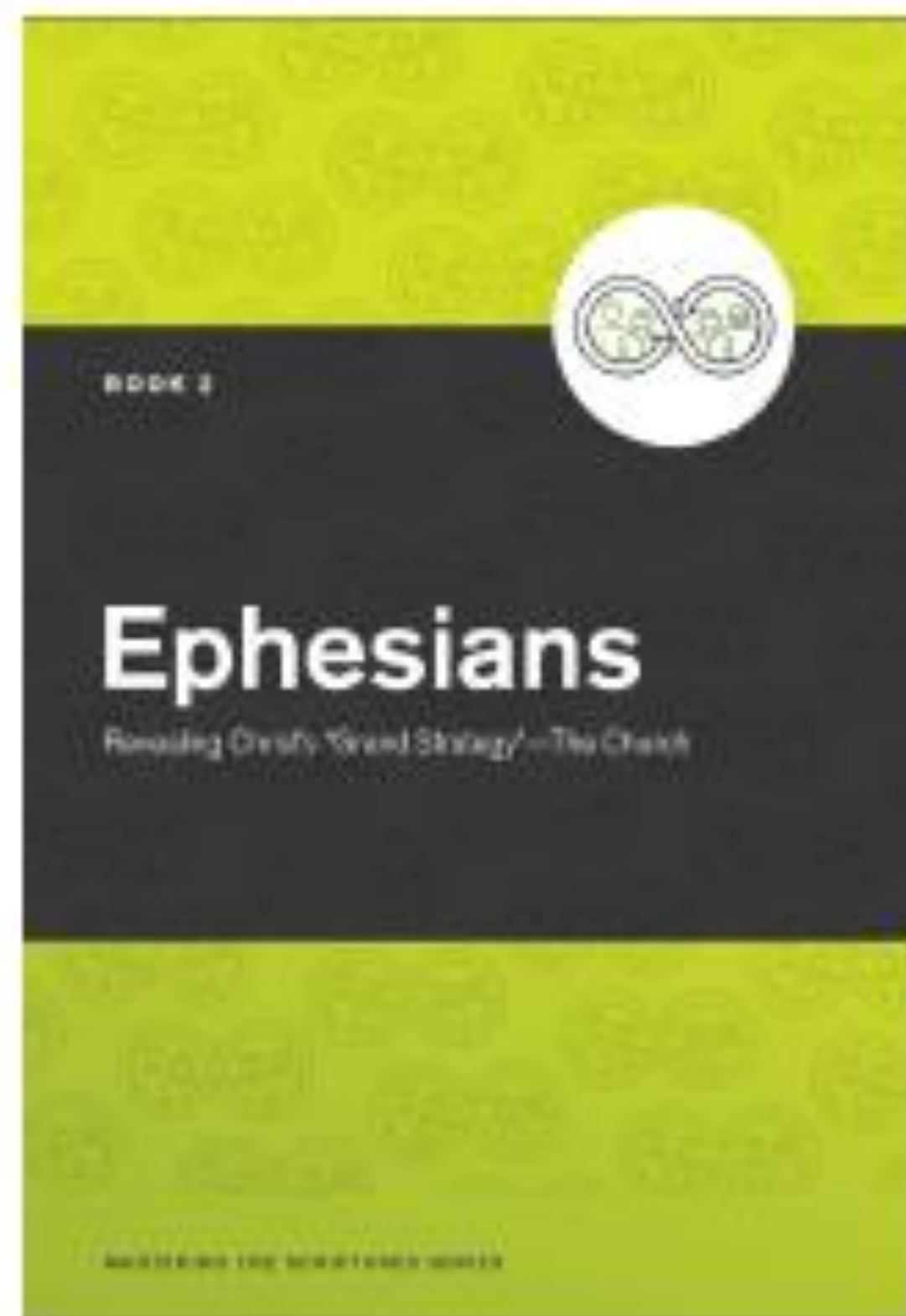




Central Iowa Initiative



Paul's Middle Letters



EPHESIANS

- Need to start with where we have been:
- Especially around what Paul says in Ephesians,
 - Setting the stage for the grand strategy
 - Leading right into the Central Iowa Initiative

What is Best in Life?

Barbarian General (actor Akio Mitamura):

“Conan, what is best in life?”

Conan (Arnold Schwarzenegger):

“To crush your enemies, see them driven before you, and to hear the lamentation of their women!”

- From the movie

Conan the Barbarian (1982)



Central Iowa Initiative

Ephesians 1:15-23, 3:14-21

1. How would you describe our calling today? What does it look like?
2. After spending the last few weeks studying Ephesians, what would you say is “Best in Life?”
3. What do you know about the Central Iowa Initiative? What is it? Why do we do it?

Ephesians 1:15–23

I have heard of your faith in the Lord Jesus and your love toward all the saints, and for this reason I do not cease to give thanks for you as I remember you in my prayers. I pray that the God of our Lord Jesus Christ, the Father of glory, **may give you a spirit of wisdom and revelation** as you come to know him, so that, with the eyes of your heart enlightened, you **may know what is the hope to which he has called you, what are the riches of his glorious inheritance among the saints, and what is the immeasurable greatness of his power for us who believe**, according to the working of his great power. God put this power to work in Christ when he raised him from the dead and seated him at his right hand in the heavenly places, far above all rule and authority and power and dominion, and above every name that is named, not only in this age but also in the age to come. And he has put all things under his feet and has made him the head over all things for the church, which is his body, the fullness of him who fills all in all.

Ephesians 3:14–21

For this reason I bow my knees before the Father, from whom every family in heaven and on earth takes its name. I pray that, according to the riches of his glory, **he may grant that you may be strengthened in your inner being with power through his Spirit, and that Christ may dwell in your hearts through faith, as you are being rooted and grounded in love.** I pray that you may have the power to **comprehend, with all the saints, what is the breadth and length and height and depth,** and to know the **love of Christ** that surpasses knowledge, so that you **may be filled with all the fullness of God.** Now to him who by the power at work within us is able to accomplish abundantly far more than all we can ask or imagine, to him be glory in the church and in Christ Jesus to all generations, forever and ever. Amen.

EPHESIANS-Implications

- Conversion and Full integration into the church and God's plan
- 10 years of trying to articulate how I felt and why I was the way I now was!
- We are now part of God's Family through the work of Christ
- God has given me a purpose and a role to play in this plan, and work to do.
- My plan is very small, yet in my head it is huge
- God's plan is huge, and I have a significant role in it. That is not about my own interests—being filled with the fullness of God
- See Beyond my own life
- Understand the plan and know how to participate in that plan

Central Iowa Initiative

**What do you know about the Central Iowa Initiative?
What is it? Why do we do it?**

Central Iowa Initiative

- The cities—Urban centers are key to the movement and expansion of the church in the United States.
- Cities and those who live in them are in need of the Gospel more than ever!
 - Our schools are in crisis
 - Our businesses seek well trained workers
 - Our workers seek good paying jobs, affordable good housing
 - Our local governments seek leaders who will transform the city for the better!

Central Iowa Initiative

- If we believe those Ephesian passages, then we know only the **hope** that comes from knowing and understanding Christ's love will offer real solutions to the overcoming issues
- Only the **power** that Paul talks about can attack the world in a way that makes any dent in the severity and depth of the issues!
- It will take well trained churches to understand and do this work, and will take all of us to get this done!!

Central Iowa Initiative

- Strengthen Churches

- That use the BILD Institute and Antioch school to establish the churches

Address community needs and issues

- Re-Build –Life skills, Faith, and Education development

Provide inexpensive degrees at all levels

- Bachelors, Masters, and Doctorate programs

Central Iowa Initiative

Issues effecting Des Moines

Education for Des Moines

- High school or higher: 84.8%
- Bachelor's degree or higher: 25.2%
- Graduate or professional degree: 7.6%

Poverty

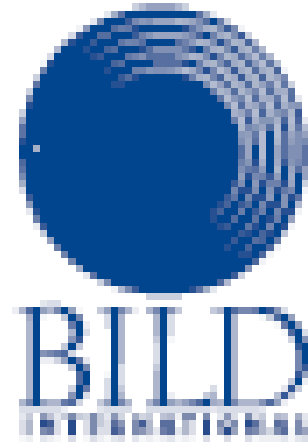
- In Des Moines 14.7% are at or under the US Poverty level (\$16,460)
- Biggest group of people at the poverty level—women 18-34

Crime and Mental Health—Crime rate higher than Nation average—by 75-85%

(click on a table row to update graph)



NA PROGRAMS



The BILD Institute

	Leadership Mastery I (L.M. I) <i>This program is key to becoming established in your faith and ministry, a lifetime investment.</i>	Leadership Mastery II (L.M. II) <i>Designed for deacons, leading women, future elders, and other key church leaders</i>	Leadership Mastery III (L.M. III) / Diploma <i>Designed for elders and other senior church leaders</i>
Curriculum	The Story First Principles I–II Lifes and SIMA MCORE	The Story First Principles I–III SIMA MCORE, Triads, 10-Steps Life ⁿ Seek the Welfare of the City	The Story & First Principles I–III Leadership Series Acts, Pauline, Essentials, Leaders, Counseling Counseling & Shepherding SIMA CAP/10 Steps Life ⁿ /Seek the Welfare
Portfolio	Portfolio setup fee	Portfolio set up fee	Portfolio set up fee
Recognition	L.M. I Certificate (Assessment and Certificate)	L.M. II Certificate (Assessment and Certificate)	Diploma of Ministry (Assessment & Diploma/Degree)



	B.Min. / B.Th. Programs <i>Ordered learning rooted in the churches for developing apostolic leaders and their co-workers</i>	M.Min. / M.Th. Programs <i>The key to developing a generation of pastors and church planters who can lead churches and transformational urban center/global city ministries.</i>	D.Min. Programs <i>The key to producing a generation of leaders capable of shaping and leading complex networks of churches focused on strategic urban centers/global cities</i>
Program	Leadership Series The Story & First Principles I–III Core Knowledge Series SIMA CAP Life ⁿ	Leadership Series The Story & First Principles I–III SIMA MAP Life ⁿ Seek the Welfare of the City	Leadership Series The Story & First Principles I–III PTP's SIMA MAP Life ⁿ Seek the Welfare of the City Dissertation Artifact
Portfolio	Portfolio setup fee Course assessment Practicum assessment	Portfolio setup fee Course assessment Practicum assessment	Portfolio setup fee Course assessment Practicum assessment
Recognition	B.Min. or B.Th. Degree	M.Min. or M.Th. Degree	D.Min. Degree



COMMUNITY DEVELOPMENT

Page 6



CULTURAL CREATIVES

Page 7



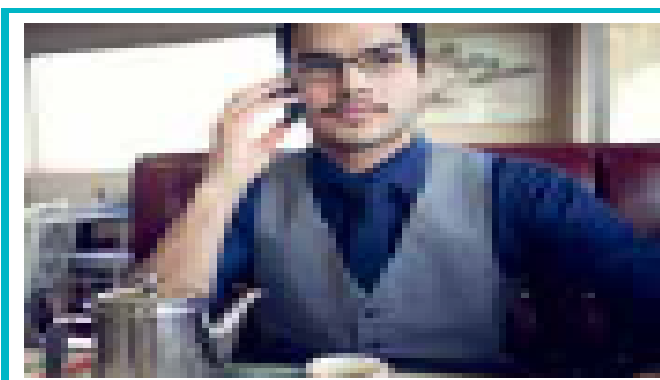
MARKETPLACE CHURCH PLANTER

Page 8



URBAN CENTER ARTISANSHIP

Page 9



URBAN CENTER ENTREPRENEURSHIP

Page 10



URBAN PROFESSIONAL

Page 11

Inaugurating 30-City Initiatives (5-year process)

Step 1*: Top Leader Agreement—½ day

- Top leader and core team of initiating church/churches
- About ½ day, informal
- Explain Initiative idea: Reaching Urban Centers; RE:BUILD; Urban Center Degree Programs
- Discuss top leader's involvement: leading initiative? degree?
- Selecting leaders/churches for Vision Day

Step 2: Vision Day—1 day (9 a.m.–2 p.m.)

- Leaders from 6–8 churches
- Hand picked churches, maybe a couple of community leaders/businessmen and women
- One-day seminar: Reaching Urban Centers
- Nice location in city center with meal (BILD pays for)

Step 3: Formation of D.Min./M.Min. cohort strategy—1 day

- Workshop on forming D.Min./M.Min. cohort; ideally a cohort of key leaders of key churches
- Formation of apostolic team around the cohort
- Formation of cohort strategy/church partnerships (i.e. Little Rock cohort system)

Step 4: Building the Master Plan—2 days

- Mapping city and 5-year strategy
- Formation of degree track team
- Formation of benefactor team
- Setting 6-month goals
- Design "city initiative" brochure and master strategy

Step 5: Hosting a JOG

- Schedule a noon to noon JOG around Seek the Welfare of the City
- Raise \$28,000 fee and 20 AS scholarships

Step 6: Vision Day 2 —1 day (9 a.m.–2 p.m.)

- 30–40 churches, around 100 leaders
- One-day seminar: Reaching Urban Centers
- Target marketing, by invite

Step 7: Inaugurating RE:BUILD in partner churches

- One-day seminar for all partner churches
- Building a team of churches—cluster—who will each commit to RE:BUILD in their churches and build 2 prototype case studies
- Identify 1 student each for prototype urban degree cohort

Step 8: Inaugurating a B.Min. Urban Degree cohort

- One-day seminar for prototype cohort
- Enroll students
- Find “ministry practicum” training program and/or apprenticeship
- Ideally find paid apprenticeships

Step 9: Build a “city team” of businesses, trade programs, community development organizations, banks

- Seminar for businessmen and women, trade program leaders, community development orgs, and urban campuses
- Gather commitments to the city initiative

Goal: 5000 urban center degrees in each city participating in the initiative

*Step 1 assumes the leader is already an Antioch School certified leader and is leading a program and probably enrolled as a student.

Central Iowa Initiative

- We have the steps to get this process started
- But it will take:
 - Time
 - Relationships
 - Investment into the community
 - Investment into the churches

Central Iowa Initiative

- There is an enormous amount of work here
- Work that will require time and energy, and will have setbacks and frustrations.
- Engagement with the Churches
- Engagement with the Community
- Begin to cast vision

Central Iowa Initiative

- Update on Des Moines
- We are slightly behind where we want to be
 - Churches Engaged, needs a lot of intentional touches

Currently Very Labor intensive

- Community—More receptive, opportunities

Doors are opening sphere of influence is widening

What is Best in Life?

- For GOD to bless us with every Spiritual Blessing, to know and walk in my calling, and to be filled with the fullness of God, and to hear and the feel the love and joy from those who are transformed by Gods Grand strategy!