



Our Work - Fully Rooting the Paradigm





# Growing in our Establishment

Weekly linear budget - \$383,670

Actual Income - \$314,592      Historical 2017-2015 \$301K, \$327k, \$311K

Conference Giving - \$63,265

### Partner Progress Report

Generated on 06/02/2018 with data from 06/01/2018

Des Moines Leadership Initiative | Active | Active Programs | All Programs | All Countries | [Apply](#)

[Download as PDF](#)

#### Our Local Leaders Competency Progress - Chart

#### Des Moines Leadership Initiative

Active

Certificate of Ministry (undergraduate)

Enrollment Year	Student Count	TOTAL			Life and Ministry Development			General Education			Core Training Modules			Ministry Practicum			Ministry Strategy Plans			Other			Major Projects			Biblical Theology in Culture Project	
		ST	CL	AF	ST	CL	AF	ST	CL	AF	ST	CL	AF	ST	CL	AF	ST	CL	AF	ST	CL	AF	ST	CL	ST	CL	
2016	1	33%	29%	25%	4%	0%	0%	N/A	N/A	N/A	100%	100%	87%	10%	0%	0%	N/A	N/A	N/A	N/A	N/A	N/A	N/A	N/A	N/A	N/A	

Master of Ministry

Enrollment Year	Student Count	TOTAL			Life and Ministry Development			General Education			Core Training Modules			Ministry Practicum			Ministry Strategy Plans			Other			Major Projects			Biblical Theology in Culture Project	
		ST	CL	AF	ST	CL	AF	ST	CL	AF	ST	CL	AF	ST	CL	AF	ST	CL	AF	ST	CL	AF	ST	CL	ST	CL	
2009	1	3%	3%	2%	2%	2%	2%	N/A	N/A	N/A	5%	5%	3%	0%	0%	0%	0%	0%	0%	N/A	N/A	N/A	N/A	N/A	N/A	N/A	
2014	2	10%	9%	3%	1%	1%	1%	N/A	N/A	N/A	25%	20%	6%	0%	0%	0%	0%	0%	0%	N/A	N/A	N/A	N/A	N/A	N/A	N/A	
2016	4	3%	3%	2%	1%	1%	1%	N/A	N/A	N/A	8%	8%	6%	0%	0%	0%	0%	0%	0%	N/A	N/A	N/A	N/A	N/A	N/A	N/A	
2017	1	0%	0%	0%	0%	0%	0%	N/A	N/A	N/A	0%	0%	0%	0%	0%	0%	0%	0%	0%	N/A	N/A	N/A	N/A	N/A	N/A	N/A	

s and developed guidelines and strategies from these principles for a

	<a href="#">View Assessment</a>	Student	Certified Leader	Associate Faculty
	<a href="#">View Assessment</a>	Student	Certified Leader	Associate Faculty
	<a href="#">View Assessment</a>	Student	Certified Leader	Associate Faculty
	<a href="#">View Assessment</a>	Student	Certified Leader	Associate Faculty
	<a href="#">View Assessment</a>	Student / Certified Leader		Associate Faculty

# The Way of Christ and His Apostles - Fully Rooting the Paradigm

We have been preparing for the conference:

- Hearer and Doers - our work is to personally become established in the teachings
- What's behind and beyond the Green Check Marks - our educational pathway culminates with “green checks” in our Cloud system
- We Love Assessment - why assessment is important and healthy for continued establishment, and how we have built our educational pathway to include continuous assessment

# The Way of Christ and His Apostles - Fully Rooting the Paradigm

1. What have you learned in the past month from the network teaching time?
2. What things are on your mind as we prepare for the international conference? What things are you encouraged about? What things are you nervous about? What things are you discouraged about?
3. What does it mean that we need to “fully root the paradigm”? What are we talking about?

# The Way of Christ and His Apostles - Rooting the Paradigm

All of us should have an individual developmental pathway

All of our families should have a developmental pathway

Our Family of Families should have a developmental pathway, guided by the local leaders

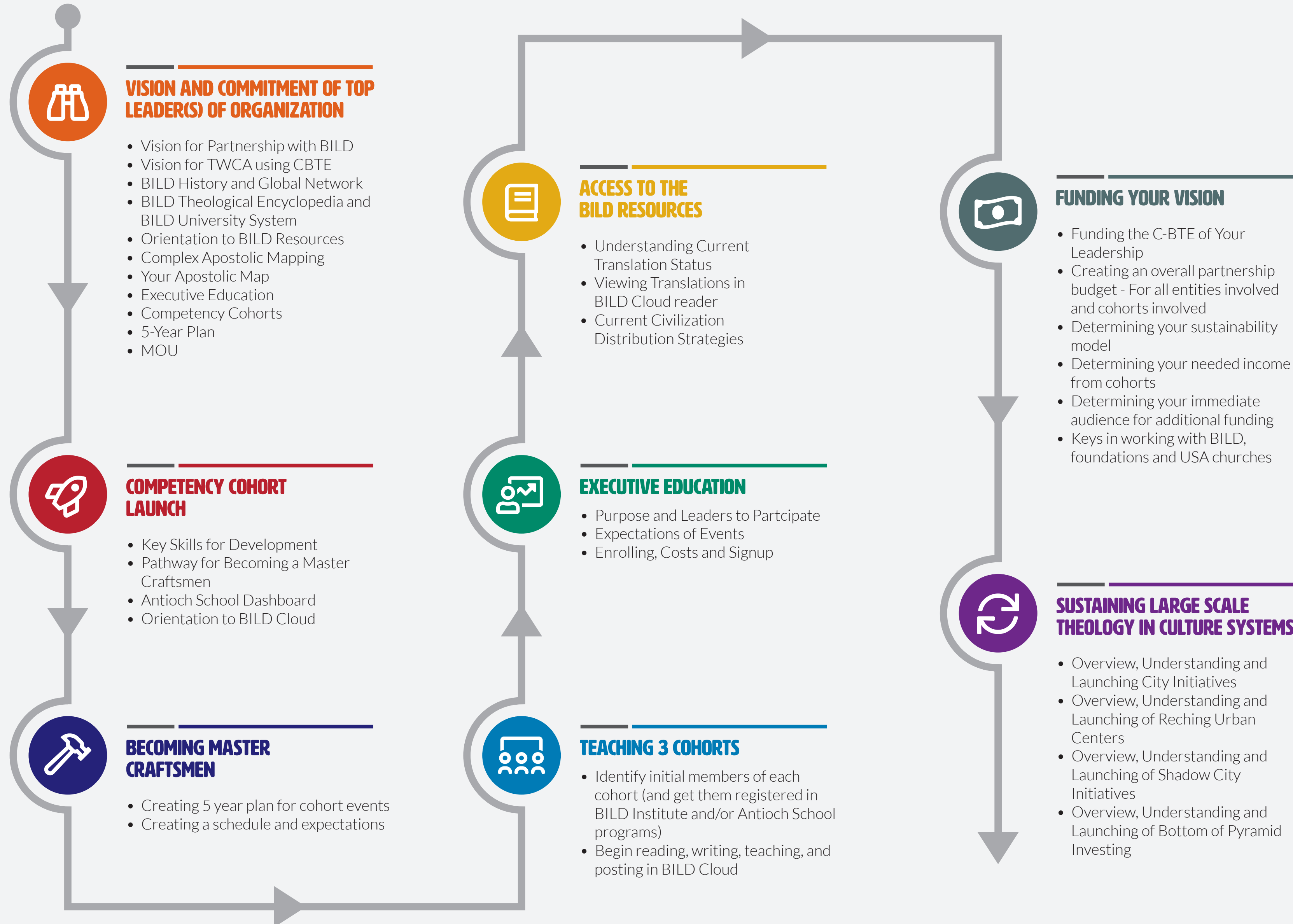
We are also responsible for our global network “family” development

# The Way of Christ and His Apostles - Rooting the Paradigm

What do people (including our global network) need from leaders, in order to fully root the paradigm?

- encouragement
- examples
- challenge
- training tools to move through the work
- need systems and clearly defined pathways for the work





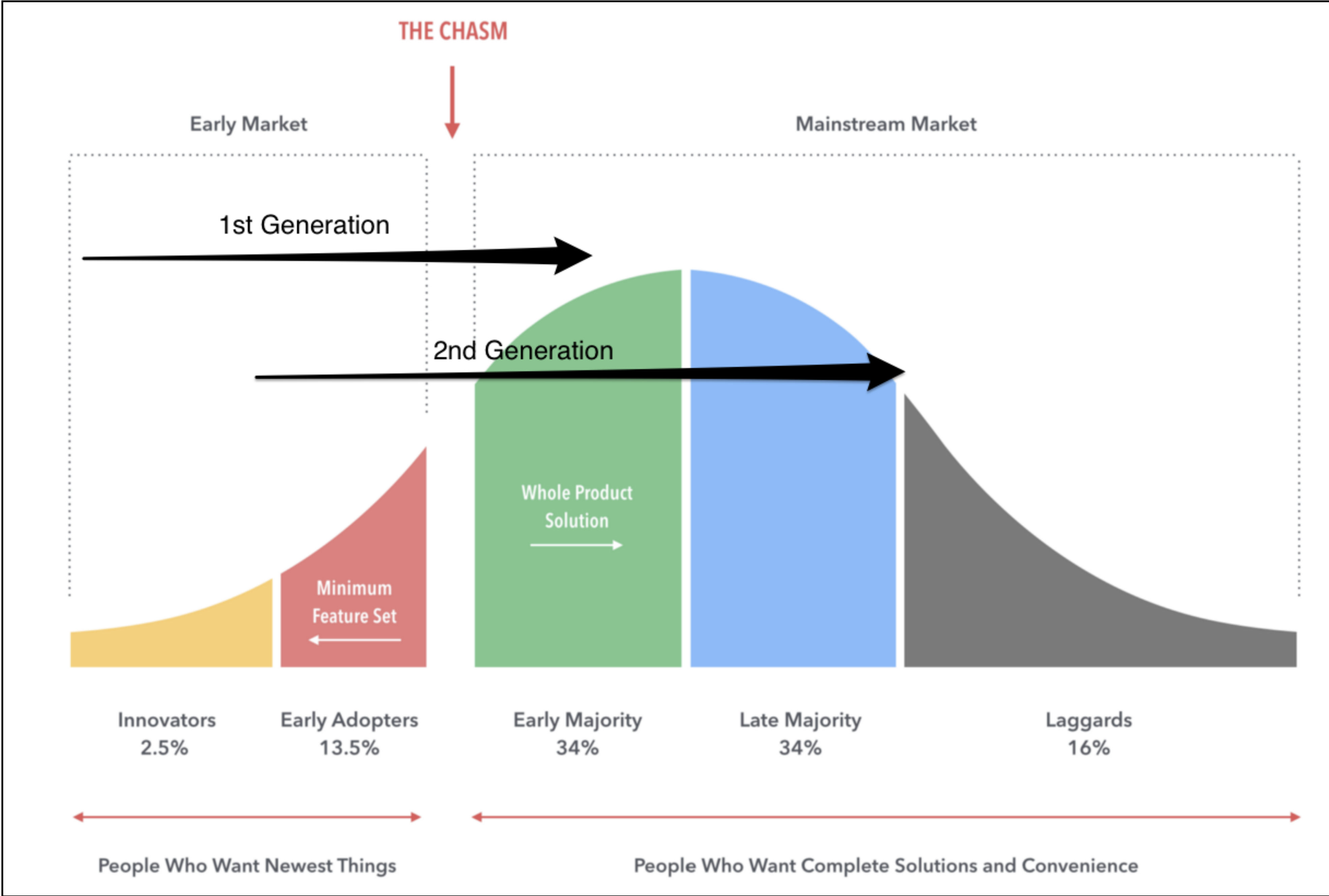
# The Way of Christ and His Apostles - Rooting the Paradigm

## Main Components of TWCA

1. Local Churches - being a family
2. Church Networks - churches living and moving among civilizations
3. Pauline/Apostolic Teams - leadership that moves among local and global networks
4. Shepherding Elders of local churches - leaders that protect and care for local churches/people

## Key Principles in Charts

- Kerygma/Didache - Pauline Cycle
- Paul's Concept of Establishing - Paul/Timothy Model



# The Way of Christ and His Apostles - Rooting the Paradigm



## The Story

Resources for opening the scriptures to those desiring to follow Jesus as the early followers did after his resurrection.

[See Details >](#)



## The First Principles Series

Engage every believer in the first principles of Christianity.

[See Details >](#)



## Mastering the Scriptures Series

Guiding maturing believers and local (modal) church leaders in a process of solidly understanding the entire Bible.

[See Details >](#)



## The Leadership Series

Comprehensive theological education within the life and ministry of local churches.

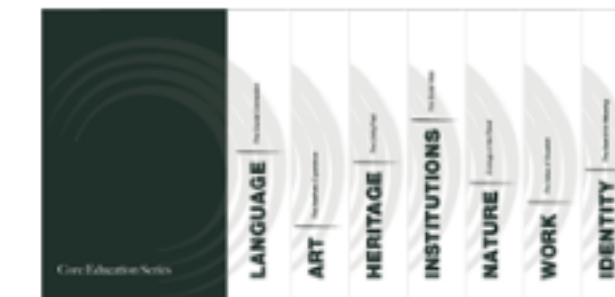
[See Details >](#)



## Life Development Resources

Resources for developing skill in all areas of life, for all ages.

[See Details >](#)



## Core Education Series

Resources designed to lay a solid general education foundation for all students.

[See Details >](#)



## Paradigm Resources

Develop your understanding of the global church-based theological education paradigm.

[See Details >](#)

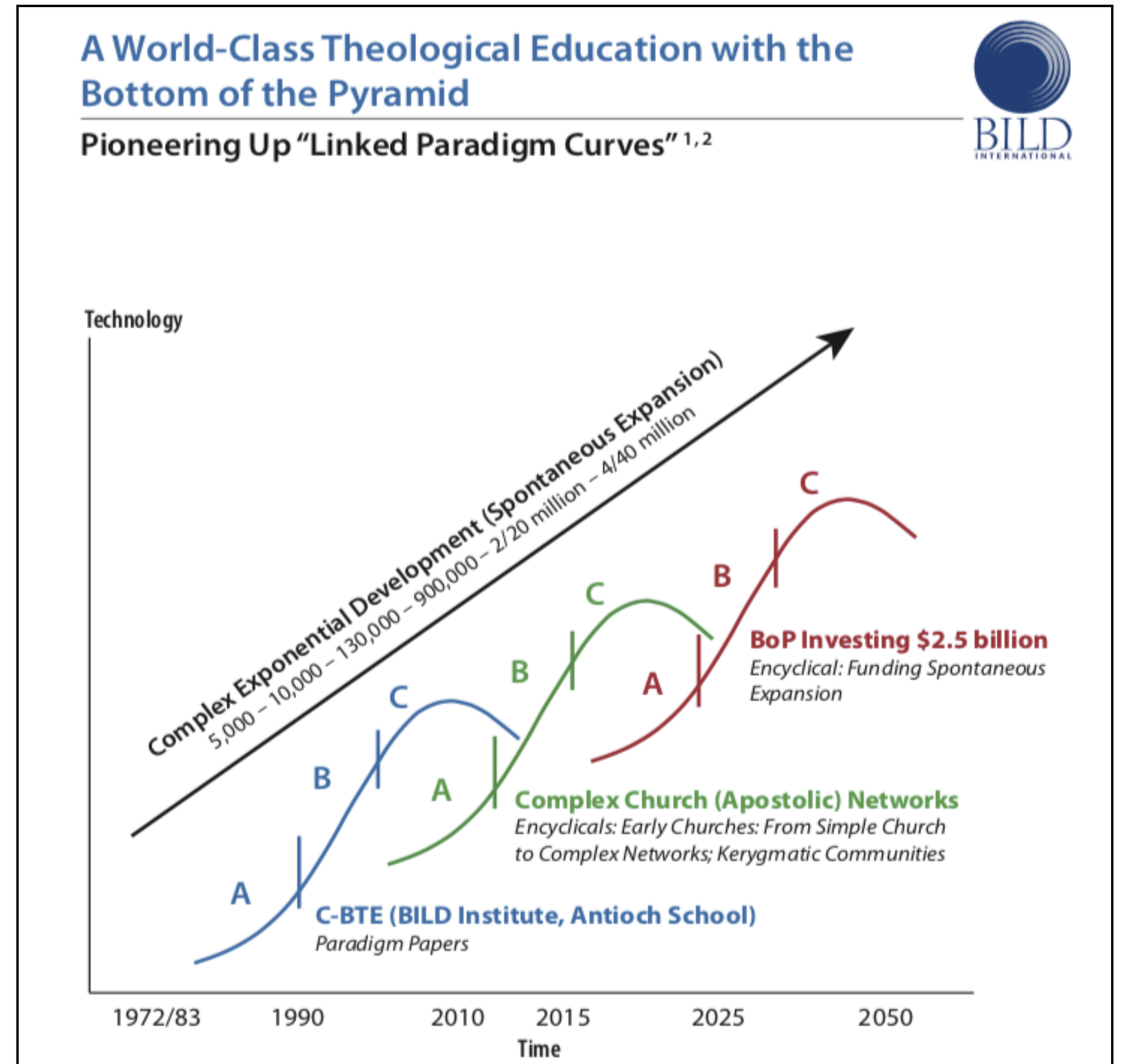
# The Way of Christ and His Apostles - Rooting the Paradigm

1. Why did God bring all of us together during this generation, what are we meant to accomplish?
2. Can we truly understand the times in which we live, during the times we live them? Or can we only understand them years later after we look back?
3. If we know what we are to accomplish, can we intentionally strategize to accomplish them or do we instead try to survive this life?
4. At least, since the 1970's this church family has been called to introduce TWCA paradigm back to the global church. How would you explain The Way of Christ and His Apostles to someone? What is it? What are we talking about?

# The Way of Christ and His Apostles - Rooting the Paradigm

Since the 1970s

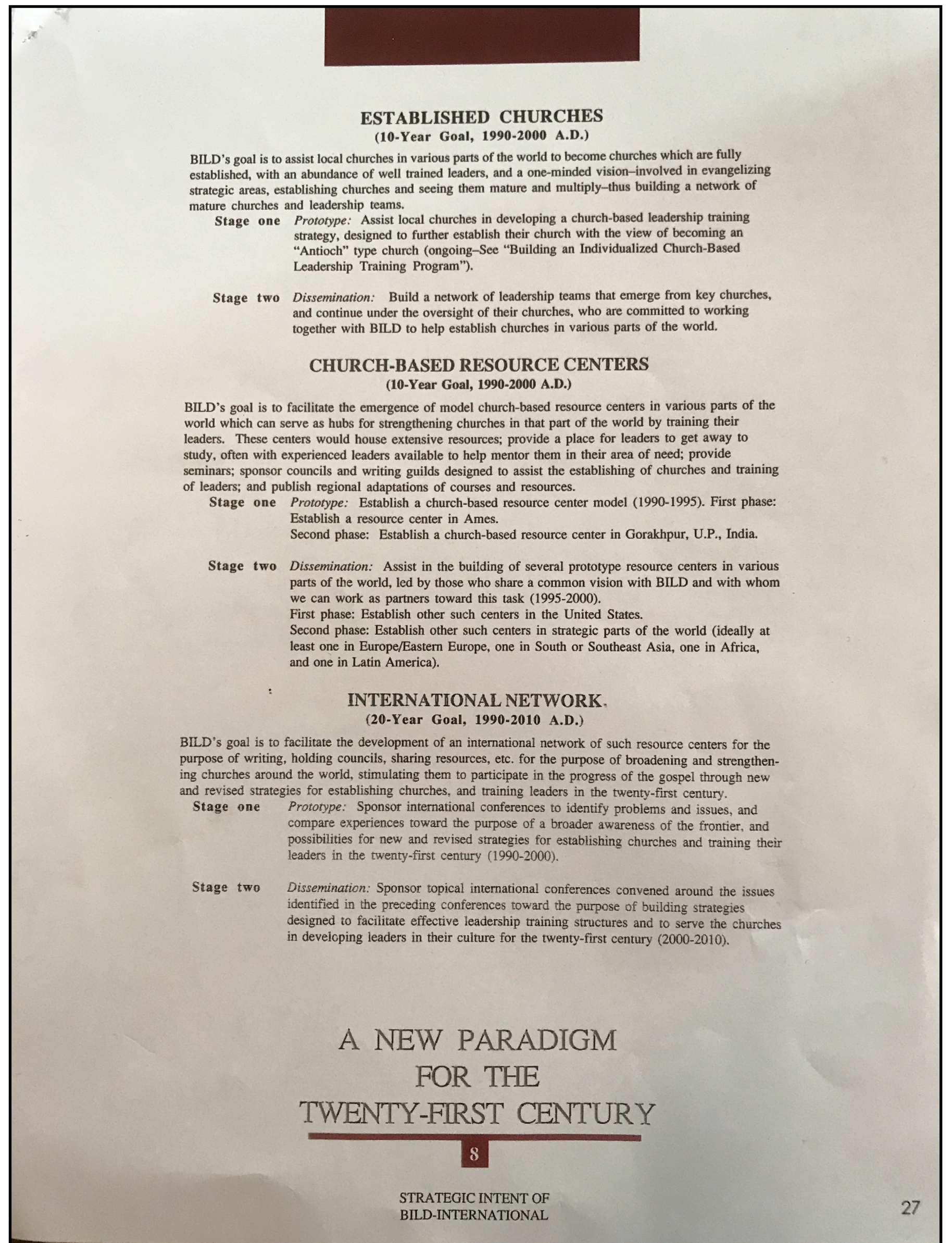
- recovered The Way of Christ and His Apostles
- created tools for churches to learn to think “biblically”, the BILD Encyclopedia
- steadily built a local model that fully represents the paradigm, churches as families, modal/sodal healthy tension
- introduced TWCA to global networks, influential leaders, targeting the global south



# The Way of Christ and His Apostles - Rooting the Paradigm

## Our Original Strategy

1. Establish the Churches
2. Create Church Based Resource Centers
3. Build an International Network



6 If you put these things before the brothers, you will be a good servant of Christ Jesus, being trained in the words of the faith and of the good doctrine that you have followed. 7 Have nothing to do with irreverent, silly myths. Rather train yourself for godliness; 8 for while bodily training is of some value, godliness is of value in every way, as it holds promise for the present life and also for the life to come. 9 The saying is trustworthy and deserving of full acceptance. 10 For to this end we toil and strive, because we have our hope set on the living God, who is the Savior of all people, especially of those who believe.

11 Command and teach these things. 12 Let no one despise you for your youth, but set the believers an example in speech, in conduct, in love, in faith, in purity. 13 Until I come, devote yourself to the public reading of Scripture, to exhortation, to teaching. 14 Do not neglect the gift you have, which was given you by prophecy when the council of elders laid their hands on you. 15 Practice these things, immerse yourself in them, so that all may see your progress. 16 Keep a close watch on yourself and on the teaching. Persist in this, for by so doing you will save both yourself and your hearers.

1 Timothy 4:6-16



<sup>4</sup>As I remember your tears, I long to see you, that I may be filled with joy. <sup>5</sup>I am reminded of your sincere faith, a faith that dwelt first in your grandmother Lois and your mother Eunice and now, I am sure, dwells in you as well. <sup>6</sup>For this reason I remind you to fan into flame the gift of God, which is in you through the laying on of my hands, <sup>7</sup>for God gave us a spirit not of fear but of power and love and self-control.

2 Timothy 1:3-7

You then, my child, be strengthened by the grace that is in Christ Jesus, <sup>2</sup>and what you have heard from me in the presence of many witnesses entrust to faithful men,<sup>[a]</sup> who will be able to teach others also. <sup>3</sup>Share in suffering as a good soldier of Christ Jesus. <sup>4</sup>No soldier gets entangled in civilian pursuits, since his aim is to please the one who enlisted him. <sup>5</sup>An athlete is not crowned unless he competes according to the rules. <sup>6</sup>It is the hard-working farmer who ought to have the first share of the crops. <sup>7</sup>Think over what I say, for the Lord will give you understanding in everything.

2 Timothy 2:1-7

# The Way of Christ and His Apostles - Rooting the Paradigm

Implications for us a network of churches leading TWCA global network

- we are to be trained, this training is going to be hard work
- we are to be self disciplined in the work, paying special attention to our teachings
- we are to be strong like a soldier, some who is trained in the work
- we are to strive to have a mastery of the work, like an athlete who is continuously training
- we are to work hard like a farmer, doing all the important tasks needed to accomplish bringing in the crop

I commend to you our sister Phoebe, a servant of the church at Cenchreae, that you may welcome her in the Lord in a way worthy of the saints, and help her in whatever she may need from you, for she has been a patron of many and of myself as well.

Greet Prisca and Aquila, my fellow workers in Christ Jesus, who risked their necks for my life, to whom not only I give thanks but all the churches of the Gentiles give thanks as well. Greet also the church in their house. Greet my beloved Epaenetus, who was the first convert to Christ in Asia. Greet Mary, who has worked hard for you. Greet Andronicus and Junia, my kinsmen and my fellow prisoners. They are well known to the apostles, and they were in Christ before me. Greet Ampliatus, my beloved in the Lord. Greet Urbanus, our fellow worker in Christ, and my beloved Stachys. Greet Apelles, who is approved in Christ. Greet those who belong to the family of Aristobulus. Greet my kinsman Herodion. Greet those in the Lord who belong to the family of Narcissus. Greet those workers in the Lord, Tryphaena and Tryphosa. Greet the beloved Persis, who has worked hard in the Lord. Greet Rufus, chosen in the Lord; also his mother, who has been a mother to me as well. Greet Asyncritus, Phlegon, Hermes, Patrobas, Hermas, and the brothers who are with them. Greet Philologus, Julia, Nereus and his sister, and Olympas, and all the saints who are with them. Greet one another with a holy kiss. All the churches of Christ greet you.

- Phoebe - a deacon, she was a **great benefit** (a benefactor) to many in the churches and to Paul
- Prisca, Aquila - **worked and risked their lives**, which had an impact on all the Gentile churches, they **hosted a church** in their home
- Epaenetus - the **first convert** in Asia
- Mary - she **worked very hard**
- Andronicus and Junia - Paul's **relatives**, In Christ before Paul
- Ampliatius - beloved in the Lord
- Urbanus, Stachys - **sends greetings**
- Apelles - approved in Christ - the **worker approved means tested, genuine** - these are directly tied to “work”, as one is approved and tested as genuine by the fruit of their work.
- Aristobulus family - Herodion, family of Narcissus - **Families**
- The **workers in the Lord** - tryphaena and Tryphosa
- Persis - **worked hard** in the Lord
- Rufus and his mother - who is **a mother to Paul as well**
- Asyncritus, Phlegon, Hermes, Patrobas, Hermas - **brothers and sisters** in Christ

# The Way of Christ and His Apostles - Rooting the Paradigm

Paul is not just greeting friends, his purpose is a greeting that binds all of Christ's churches. He is building a church network. This is the model left for us.

In order to continue to continue to establish and mature a global network we need to:

- be living it out individually and as a families, being consistently immersed in it
- be fully engaged as churches, investing in each other
- fully committing ourselves to the rooting of the global network, the conference is one of everyone's best opportunities to fully engage